

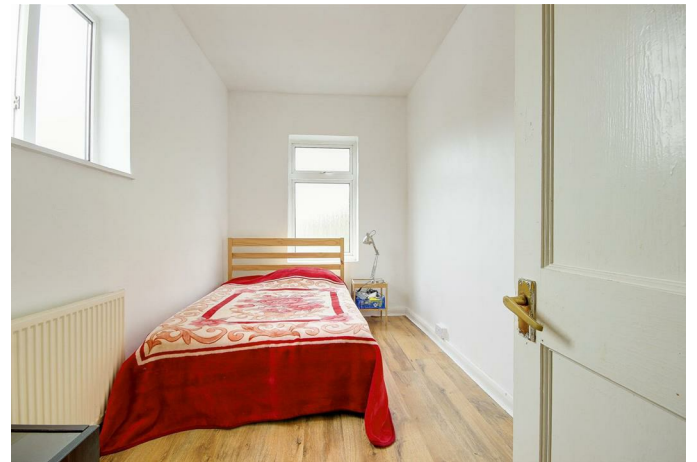
Castles

OFFERS IN EXCESS OF
£439,950
Bury Street
Edmonton, N9 7LD

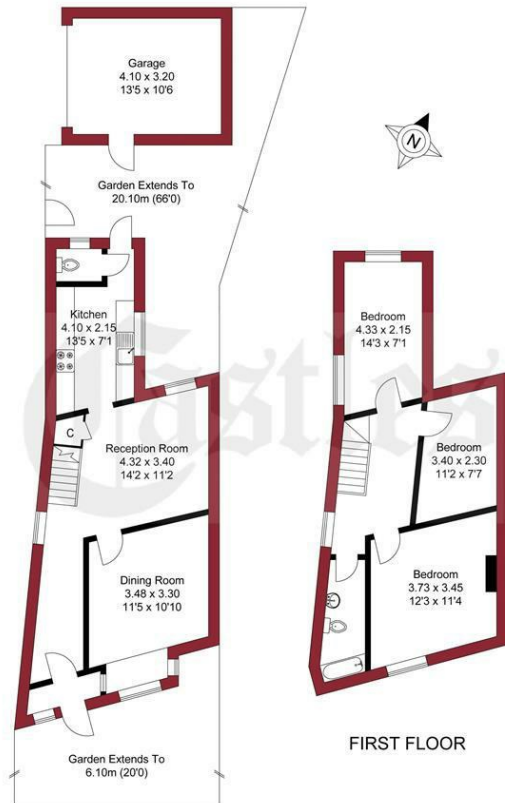
PROPERTY SUMMARY

A three bedroom Victorian end of Terraced property situated within 1/4 mile of Edmonton Green with its shops and transport links. The property comprises of two receptions, kitchen and WC to ground floor with a further three bedrooms and bathroom to first floor. It also has features to include, 20ft rear garden leading to garage, double glazing and gas central heating.





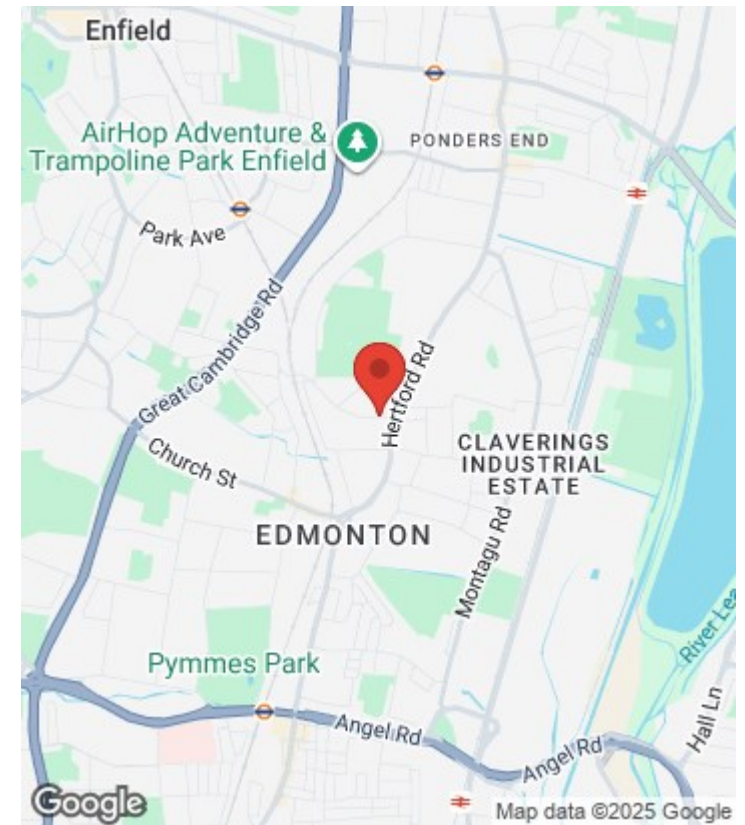
APPROXIMATE GROSS INTERNAL AREA
85.70 sqm / 922.46 sqft (Excluding Garage)
98.80 sqm / 1063.47 sqft (Including Garage)



GROUND FLOOR

THIS PLAN IS FOR ILLUSTRATION ONLY AND MAY NOT BE
REPRESENTATIVE OF THE PROPERTY

For a guide to the area
please scan this code for
more information



House - End Terrace

Freehold

Council: DJF Solicitors

Council Tax Band: D

Agents Note: Whilst every care has been taken to prepare these particulars, they are for guidance purposes only. All measurements are approximate and are for general guidance purposes only and whilst every care has been taken to ensure their accuracy, they should not be relied upon and potential buyers/tenants are advised to recheck the measurements



OFFICE ADDRESS

438 Hertford Road
Edmonton
London
N9 8AB

OFFICE DETAILS

020 8804 8123
edmonton@castles.london
<https://www.castles.london/>

Energy Efficiency Rating		Current	Potential
Very energy efficient - lower running costs			
(62 plus) A			
(81-91) B			
(69-80) C			
(55-68) D			
(39-54) E			
(21-38) F			
(1-20) G			
Not energy efficient - higher running costs			
England & Wales		EU Directive 2002/91/EC	